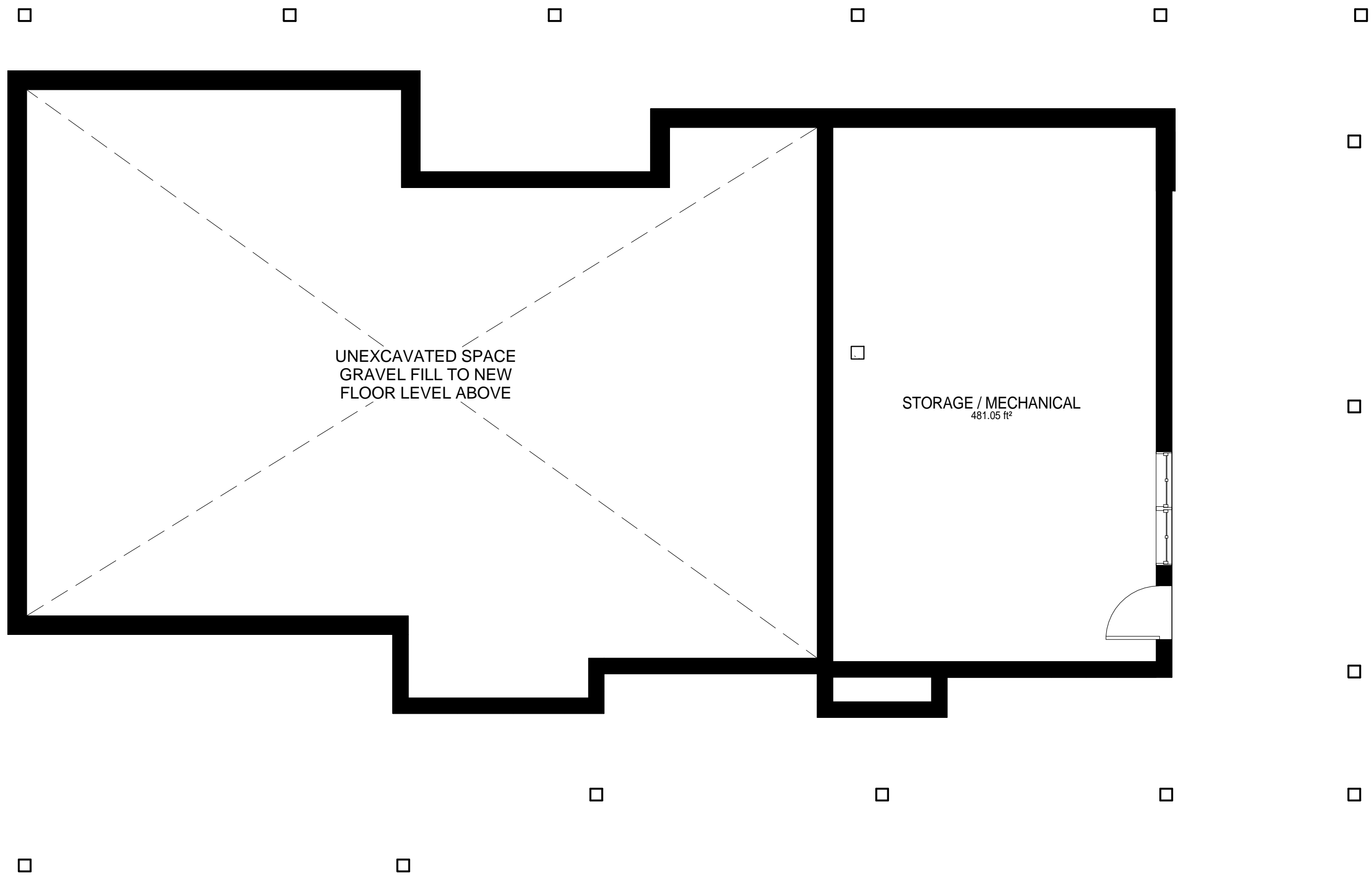


GROVE RESIDENCE
 443202 McCORMICK'S SIDE ROAD
 DURHAM, GREY COUNTY, ONTARIO

SITE PLAN
 07/21/16

 **MASRI O Inc.**
ARCHITECTS
 101-609 KUMPF DRIVE
 WATERLOO, ON, N2V 1K8
 PH. 519.579.0072
 www.MasriO.ca



UNEXCAVATED SPACE
GRAVEL FILL TO NEW
FLOOR LEVEL ABOVE

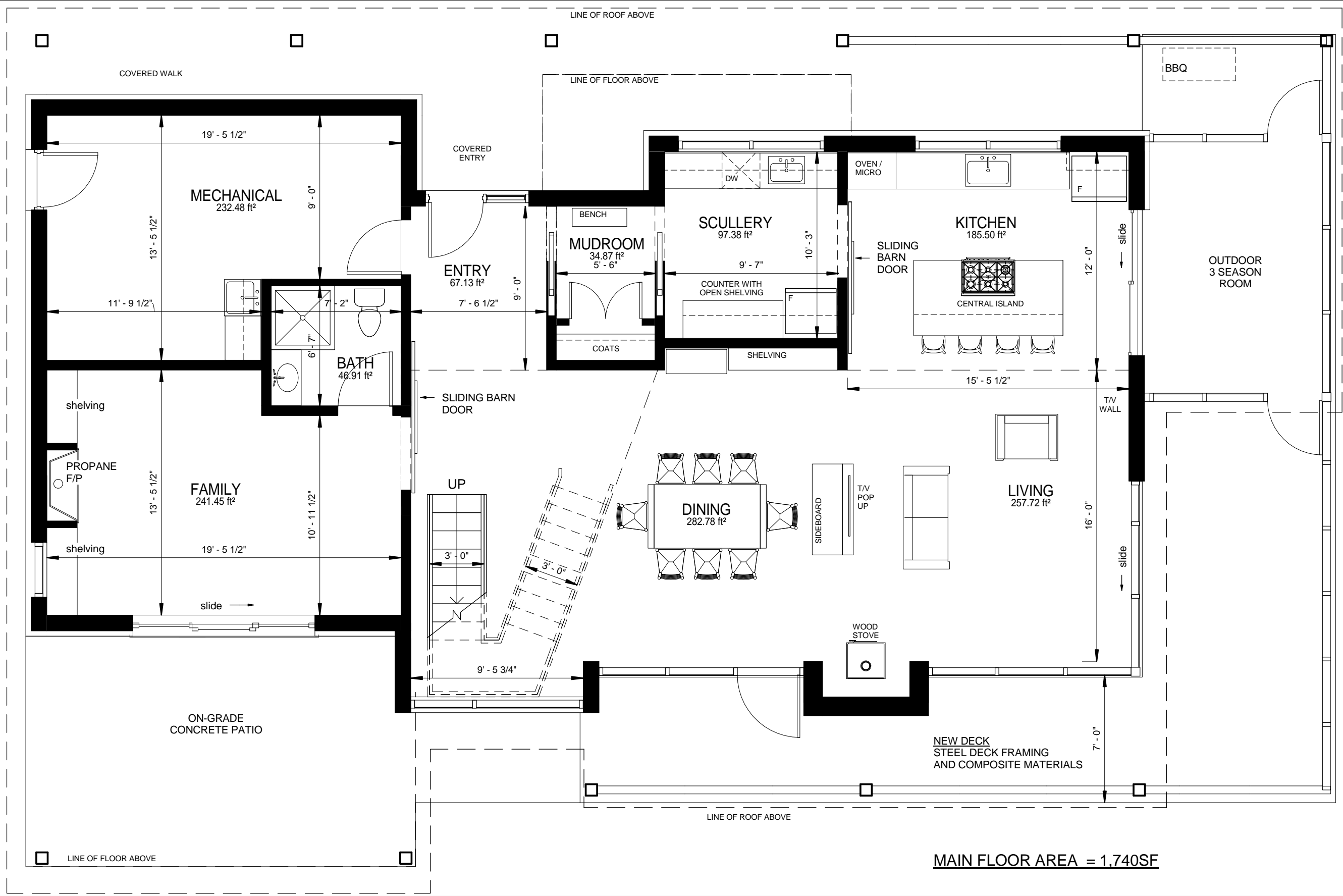
STORAGE / MECHANICAL
481.05 ft²

GROVE RESIDENCE
443202 McCORMICK'S SIDE ROAD
DURHAM, GREY COUNTY, ONTARIO

BASEMENT PLAN
12/14/15



MASRI O Inc.
ARCHITECTS
101-609 KUMPF DRIVE
WATERLOO, ON, N2V 1K8
PH. 519.579.0072
www.MasriO.ca

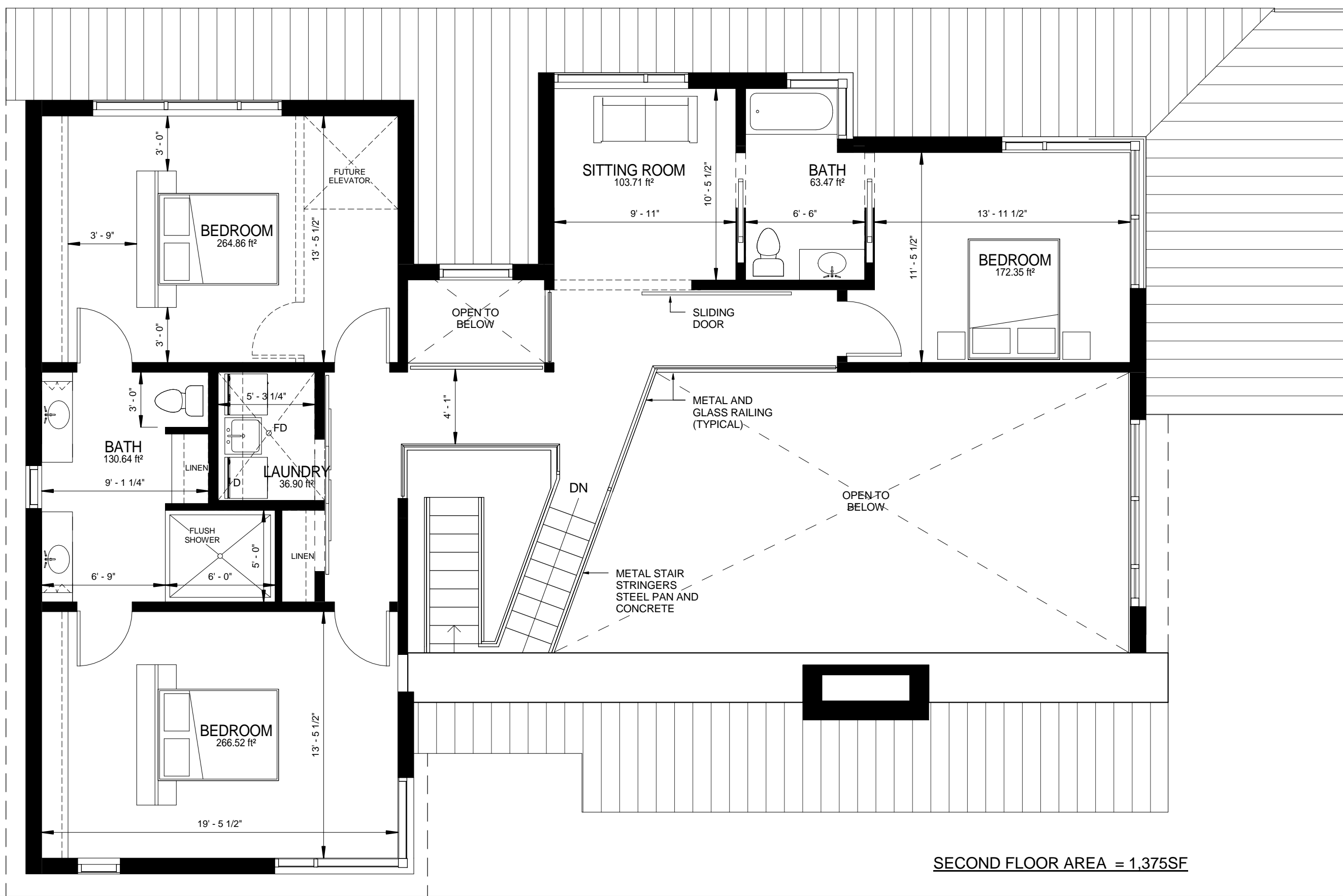


GROVE RESIDENCE
443202 McCORMICK'S SIDE ROAD
DURHAM, GREY COUNTY, ONTARIO

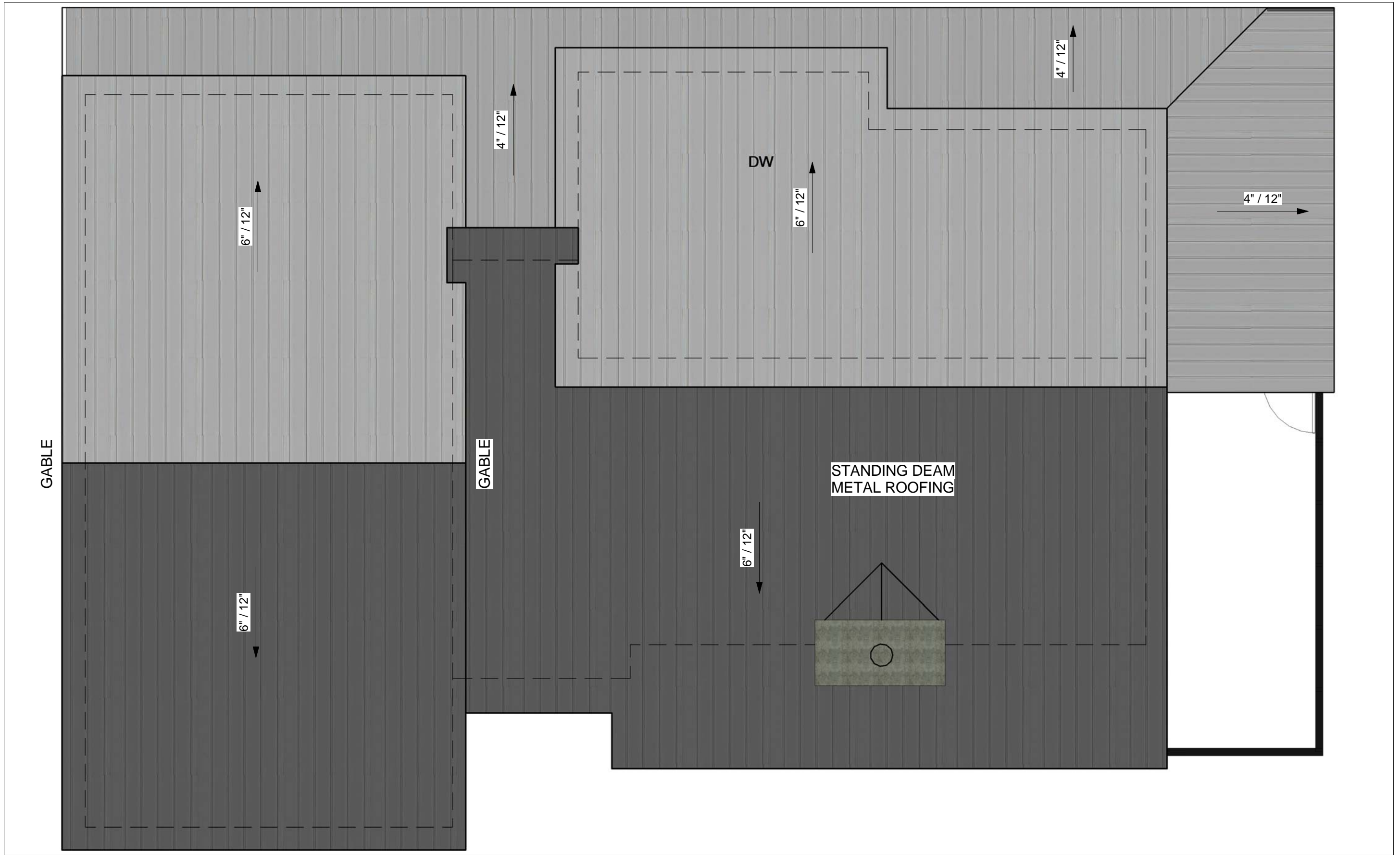
GROUND FLOOR PLAN
JULY 5 2016



MASRI O Inc.
ARCHITECTS
101-609 KUMPF DRIVE
WATERLOO, ON, N2V 1K8
PH. 519.579.0072
www.MasriO.ca



SECOND FLOOR AREA = 1,375SF



GROVE RESIDENCE
 443202 McCORMICK'S SIDE ROAD
 DURHAM, GREY COUNTY, ONTARIO

ROOF PLAN
 12/14/15



MASRI O Inc.
 ARCHITECTS
 101-609 KUMPF DRIVE
 WATERLOO, ON, N2V 1K8
 PH. 519.579.0072
 www.MasriO.ca



GROVE RESIDENCE
 443202 McCORMICK'S SIDE ROAD
 DURHAM, GREY COUNTY, ONTARIO

NORTH ELEVATION

07/21/16



MASRI O Inc.
 ARCHITECTS
 101-609 KUMPF DRIVE
 WATERLOO, ON, N2V 1K8
 PH. 519.579.0072
 www.MasriO.ca



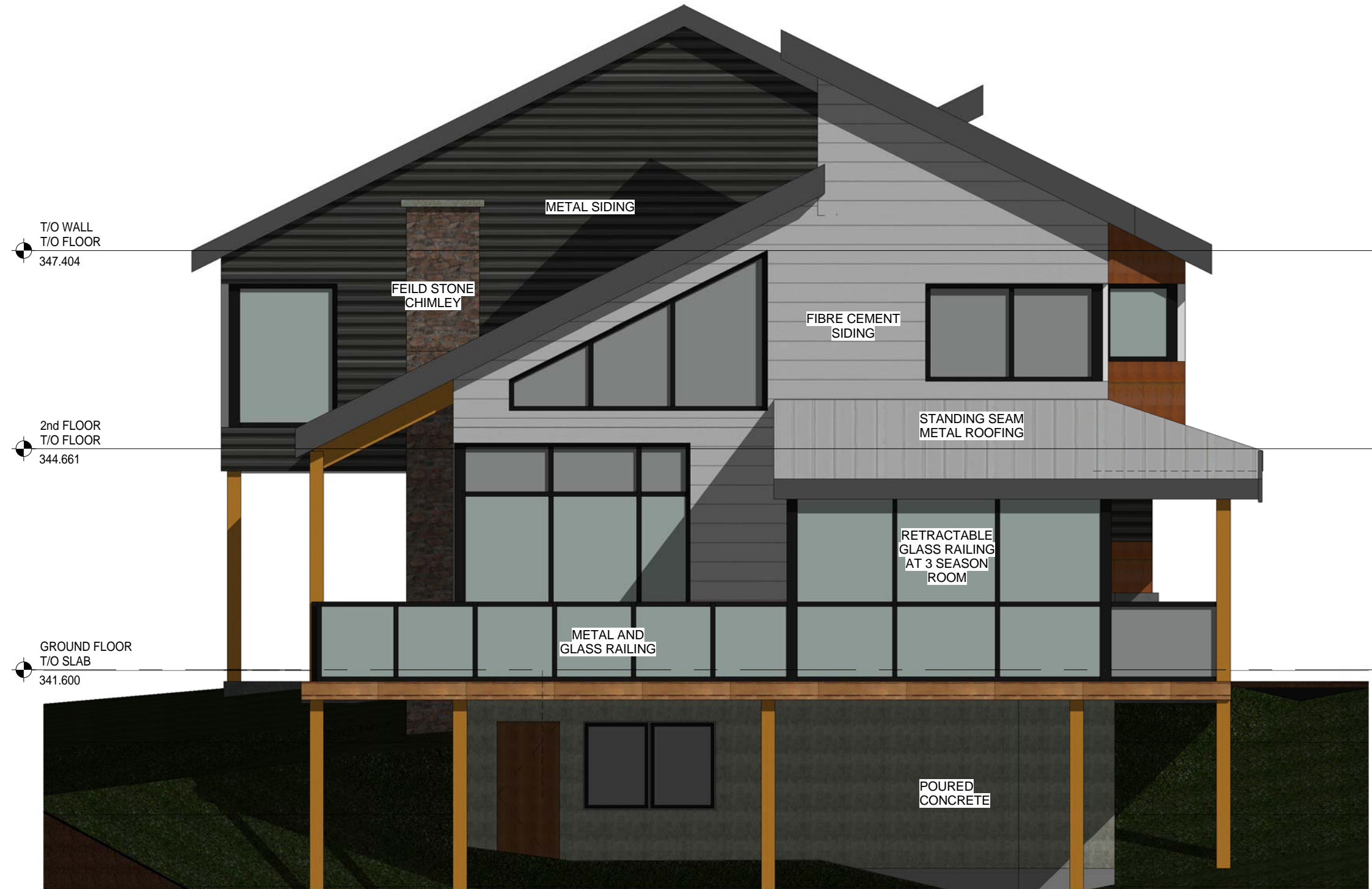
GROVE RESIDENCE
 443202 McCORMICK'S SIDE ROAD
 DURHAM, GREY COUNTY, ONTARIO

SOUTH ELEVATION

07/21/16



MASRI O Inc.
 ARCHITECTS
 101-609 KUMPF DRIVE
 WATERLOO, ON, N2V 1K8
 PH. 519.579.0072
 www.MasriO.ca



GROVE RESIDENCE
 443202 McCORMICK'S SIDE ROAD
 DURHAM, GREY COUNTY, ONTARIO

EAST ELEVATION

07/21/16



MASRI O Inc.
 ARCHITECTS
 101-609 KUMPF DRIVE
 WATERLOO, ON, N2V 1K8
 PH. 519.579.0072
 www.MasriO.ca



GROVE RESIDENCE
443202 McCORMICK'S SIDE ROAD
DURHAM, GREY COUNTY, ONTARIO

WEST ELEVATION

07/21/16



MASRI O Inc.
ARCHITECTS
101-609 KUMPF DRIVE
WATERLOO, ON, N2V 1K8
PH. 519.579.0072
www.MasriO.ca



GROVE RESIDENCE
443202 McCORMICK'S SIDE ROAD
DURHAM, GREY COUNTY, ONTARIO

SOUTH PERSPECTIVE

07/21/16



MASRI O Inc.
ARCHITECTS
101-609 KUMPF DRIVE
WATERLOO, ON, N2V 1K8
PH. 519.579.0072
www.MasriO.ca



GROVE RESIDENCE
443202 McCORMICK'S SIDE ROAD
DURHAM, GREY COUNTY, ONTARIO

NORTH PERSPECTIVE

07/21/16



MASRI O Inc.
ARCHITECTS
101-609 KUMPF DRIVE
WATERLOO, ON, N2V 1K8
PH. 519.579.0072
www.MasriO.ca